

**NWI**

**Fabrication**

# Capability Statement



## ABOUT NWI FABRICATION

NWI Fabrication is a premier engineering and metal fabrication company based in Pendle Hill, NSW. With a strong commitment to innovation, quality, and customer satisfaction, we have become a trusted partner for businesses across various industries. Our team of skilled professionals, modern facilities, and years of experience enable us to deliver tailor-made solutions that meet our clients' unique needs.

## INDUSTRIES WE SERVE

- Mining and Resources
- Construction and Infrastructure
- Oil and Gas
- Agriculture
- Retail
- Energy and Renewables
- Manufacturing
- Transport and Logistics

## ACCREDITATIONS

### Australian Steel Institute

As major partners in the industry, ASI provide expertise and professional knowledge of metal fabrication and quality certification.

We closely work with ASI to constantly improve our business and production models so we can better serve our customers.



### ISO9001

NWI Fabrication are ISO9001 Quality Management System (QMS) accredited, demonstrating our ability to deliver high quality products consistently and conform to all regulatory requirements. As a company, we continuously strive to improve our customer satisfaction through effective application of the ISO9001 Quality Management System.





# OUR CORE CAPABILITIES

**World-class precision,  
Locally delivered.**



## Structural Steel Engineering

- Expertise in designing and engineering structural steel solutions for various industries.
- Experience in complying with industry standards and codes for safe and reliable constructions.

## Custom Fabrication Services

- Ability to provide a wide range of custom metal products for our clients, tailored to your requirements as well as your budget and time restrictions.
- Our experienced team of welders and boilermakers will support you through every step from design through to execution.
- From design engineering including structural, fabrication, assembly and commissioning, we can project manage any modifications or enhancement required for your solution.

## Design & Detailing

- Skilled draftsmen capable of creating detailed drawings and 3D models for efficient project visualisation.
- Expertise in steel detailing to ensure accurate fabrication and smooth assembly on-site.
- Collaboration with architects and engineers to streamline the design-to-fabrication process.

## Machining & CNC Services

- State-of-the-art machining capabilities, including CNC technology, for precise and intricate metal shaping.
- Efficiency in handling large production runs and one-off prototypes.

# The NWI DIFFERENCE

## VISION

**Australia's leading provider of fabricated metal products & services.**

## MISSION

To put clients minds at ease by delivering practical solutions and exceeding expectations every time.

## CULTURE

We aim to deliver a fun, friendly and safe workplace for all employees where being real, genuine and your best self is encouraged daily. NWI believes in not just creating jobs but building careers in a connected and innovative culture.



**Enable Success**



**Work Respectively**



**Have Integrity**



**Act Commercially**



**Be Curious**

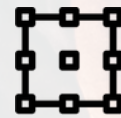
## DESIGN & CONSTRUCT TOOLS

*“We relish a challenge, we love to collaborate, and we always deliver the best quality outcomes for our clients”*

By harnessing the power of digital technology combined with the innovation expertise of our professional Drafters, we can deliver tailored solutions and transformative outcomes for our clients.

We are early adopters of new technology whether it be for engineering analysis, design, documentation or communication.

For the client we are able to optimise projects in terms of quality, sustainability, flexibility and safety.



### Design Tools

Inventor, Onshape, Civil 3D

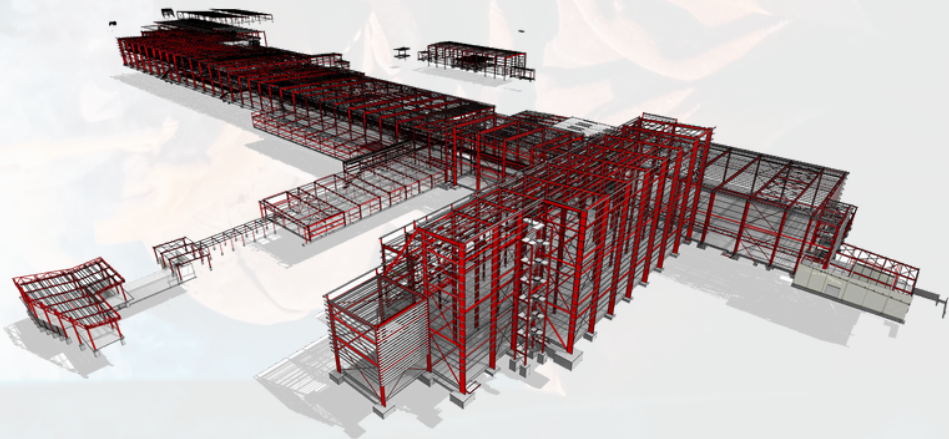


### Drafting Tools

AutoCAD, BIM, BIM 360, BIM Collaborate Pro, Navisworks (Clash-detection), Revit, Advanced Steel, Vault

## BUILDING INFORMATION MODELLING (BIM)

We build a digital representation of our designed solution, across its lifecycle, from planning and design to construction and operations.



## OUR PROJECTS

### **Menzies Aviation- 3m X 4m 10t Platform Scale and Ramps**

Working in conjunction with our partners at NWI Group, NWI Fabrication designed, engineered, and developed a customized platform scale for Menzies Aviation.



### **Lynas Corporation – 60m Structural Weighbridge**

Working with our partners at NWI Group, we fabricated Lynas Corporation a weighbridge capable of weighing road-trains up to 80 metric tons over 60m.



### **Berendsen Fluid Power – Structural Steel Fabrication & Installation**

NWI provided a bespoke structural solution to Berendsen fluid powder that would form part of a structural support for a 1.6t gantry crane.



### **Consolidated Property Services x 10 Stainless Steel Sorting Tables**

NWI provided Consolidated Property Services with a bespoke solution that enables their team to accurately sort and identify types of waste.



### **Big Screen Video x Structural Steel Frame for new LED Screen**

NWI Fabrication in collaboration with Big Screen Video (BSV) Supplied, fabricated, and installed structural framing for a new LED screen for St Johns Bowling Club.



### **NORTHLINE LOGISTICS x 3m X 4m Structural Scale Platform**

NWI Fabrication in conjunction with our partners NWI Weighing designed, supplied, fabricated & Installed a replacement structural platform for Northline Logistics.





# OUR PROJECTS

## Menzies Aviation- 3m X 4m 10t Platform Scale and Ramps

Working in conjunction with our partners at NWI Group, NWI Fabrication designed, engineered, and developed a customized platform scale for Menzies Aviation.



## Lynas Corporation – 60m Structural Weighbridge

Working with our partners at NWI Group, we fabricated Lynas Corporation a weighbridge capable of weighing road-trains up to 80 metric tons over 60m.



## Berendsen Fluid Power – Structural Steel Fabrication & Installation

NWI provided a bespoke structural solution to Berendsen fluid powder that would form part of a structural support for a 1.6t gantry crane.

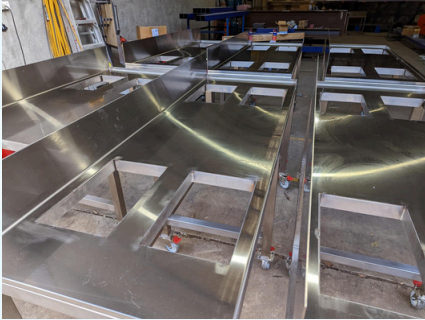




## OUR PROJECTS

### Consolidated Property Services x 10 Stainless Steel Sorting Tables

NWI provided Consolidated Property Services with a bespoke solution that enables their team to accurately sort and identify types of waste.



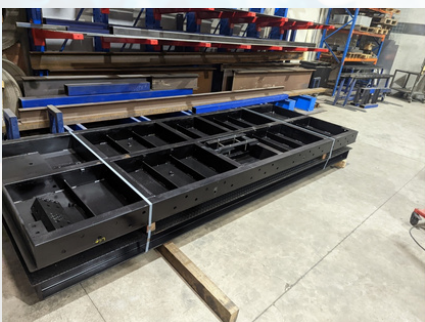
### Big Screen Video x Structural Steel Frame for new LED Screen

NWI Fabrication in collaboration with Big Screen Video (BSV) Supplied, fabricated, and installed structural framing for a new LED screen for St Johns Bowling Club.



### NORTHLINE LOGISTICS x 3m X 4m Structural Scale Platform

NWI Fabrication in conjunction with our partners NWI Weighing designed, supplied, fabricated & Installed a replacement structural platform for Northline Logistics.



## CONTACT

### **NWI Fabrication**

3/365 Wentworth Avenue,  
Pendle Hill,  
NSW  
2145

☎ 02 8868 2221

✉ [info@nwifabrication.com.au](mailto:info@nwifabrication.com.au)

🌐 [www.nwifabrication.com.au](http://www.nwifabrication.com.au)

## TEAM

### **Dominic Moraitis** Fabrication Manager

☎ 02 8868 2230

✉ [dominic.moraitis@nwigroup.com.au](mailto:dominic.moraitis@nwigroup.com.au)





## CORE COMPETENCIES

### • **Structural Steel Engineering:**

- Expertise in designing and engineering structural steel solutions for various industries.
- Experience in complying with industry standards and codes for safe and reliable constructions.

### • **Onsite Welding and Preventative Maintenance:**

- Skilled team of certified welders capable of performing onsite welding for repairs and installations.
- Proactive preventative maintenance programs to prolong the lifespan of equipment and structures.
- Swift response and emergency welding services to minimise downtime and ensure operational continuity.

### • **Bespoke/Custom Steel Fabrication/Engineering:**

- Specialisation in creating tailor-made steel fabrication solutions to meet unique project requirements.
- Flexibility to adapt to complex projects and deliver personalised outcomes.

### **Finishing Services:**

- Comprehensive finishing options, including powder coating, galvanising, and painting.
- Adherence to environmental and safety standards in finishing processes.

### • **Retail Fit-Outs and Balustrading:**

- Experience in designing and executing retail fit-outs and balustrading that enhance brand identity and customer experience.
- Proficiency in creating stylish and secure balustrades for commercial and residential properties.

### **Machining and CNC Services:**

- State-of-the-art machining capabilities, including CNC technology, for precise and intricate metal shaping.
- Efficiency in handling large production runs and one-off prototypes.

### **Drafting and Steel Detailing Services:**

- Skilled draftsmen capable of creating detailed drawings and 3D models for efficient project visualisation.
- Expertise in steel detailing to ensure accurate fabrication and smooth assembly on-site.
- Collaboration with architects and engineers to streamline the design-to-fabrication process.